



AUTOMOTIVE EXCELLENCE



## LONG TERM COMMITMENT TO SUSTAINABILITY

Shukhar Exim LLP, an Rajkot based company, founded in the year 1977 with our greatest efforts to manufacture & supply of high quality spare parts especially for Two wheeler and Three wheeler vehicles. Since then, over the years the company has achieved the Goodwill & notoriety in terms of excellent quality, reliability, and transportation of the products. We supply complete range of three wheeler spare parts for Bajaj RE Tuk Tuk, TVS King Tuk Tuk, APE Piaggio Tuk Tuk.



## WHY US?

We have set the benchmark in both, domestic and international markets with the quality and performance of our automotive parts. The international success of our organization is largely attributed to the following factors:

### INNOVATIVE

Our products achieve a one of a kind state of the art technology and our power pact team of creative employees and their groundbreaking solutions covers our way to constant progress.

### TESTED RELIABILITY

We aim to achieve perfection between reliability and design. Our products are engineered by a dedicated team of specialists and are manufactured using top quality raw materials with verified Quality policies assuring the best protection to the end user.

### PERFORMANCE

It has never been about performing faster or growing shortly, for us whether the journey is long or short, journeys should be safe. This is our state of focus. We ensure you that every single part of our product range serves you the safety purpose.

### PRODUCTION & QUALITY

We at Shukhar EXIM, are passionate perfectionists. Our specialists pay close attention to every detail. Along with a great global existence we have gained constant development in every area of our activities.

FORK CONE  
SET COMPACT

\$ 1.05



FORK CONE  
SET OLD

\$ 1.01



FORK PIVOT

\$ 1.01



FRONT AXLE  
COMPACT

\$ 1.30



GABRIEL  
SHOCKER FRONT

\$ 4.48



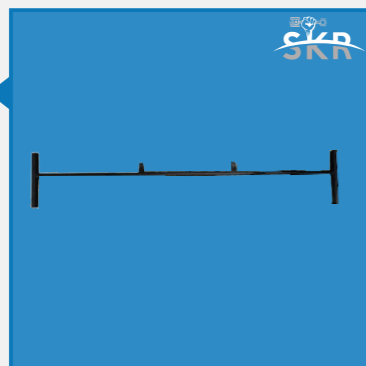
GLASS  
FRAME APE

\$ 13.10



H  
PIPE

\$ 1.59



ROTOR ASSLY  
COMPACT VENDOR

\$ 8.27



RUBBER  
MATTING

\$ 5.24



SHOCKER  
CLAMP

\$ 0.40



TYRE WITH TUBE  
SET 408 SIZE

\$ 9.24



ROCKER  
ARMS SET

\$ 1.72



REAR  
FLOOR

\$ 5.38



REVERSE  
CABLE INNER

\$ 0.08



REAR SHOCKER  
SPRING

\$ 2.83



Y  
BAR

\$ 8.00



FLANGE SMALL  
COMPACT

\$ 1.19



WHEEL RIM  
CENTRE PLATE

\$ 1.17



BRAKE SHOE  
SET

\$ 0.80



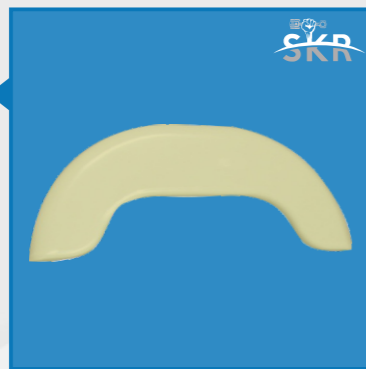
SLIDER  
BLOCK SET

\$ 0.21



SIDE  
MUDGUARD Set

\$ 2.41



CLUTCH  
PLATE 2S

\$ 0.48



WHEEL RIM  
COMPACT

\$ 3.86



GLASS FRAME  
COMPACT

\$ 15.17



REAR DOOR  
COMPACT

\$ 4.69



CYLINDER BLOCK  
WITH PISTON

\$ 11.03



FRONT  
MUDGUARD

\$ 2.55



SILENCER  
ASSLY OLD

\$ 4.97



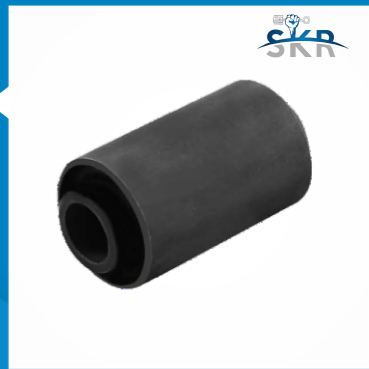
REAR BRAKE  
SHOE PLATE SET

\$ 3.03



TRAILING  
ARM BUSH

\$ 0.22



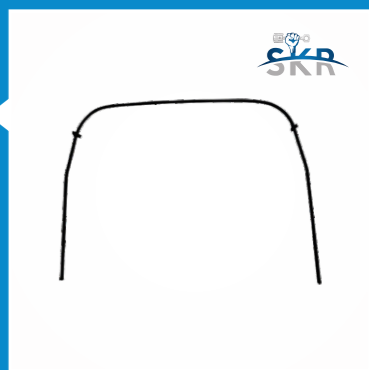
TRAILING  
ARM SET

\$ 15.17



U  
PIPE

\$ 1.79



BRAKE  
DRUM

\$ 2.90



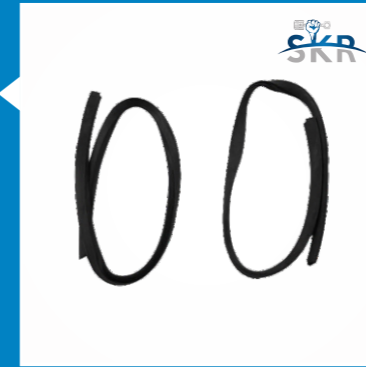
COMPLETE BODY  
WITH COLOR

\$ 64.83



SIDE MUDGUARD  
BEADING

\$ 0.25



KICK  
BOX

\$ 0.99



AUTO  
CHASIS

\$ 110.34



DERA

\$ 17.93



KICK HANDLE  
WITH STAND

\$ 1.52



NECK

\$ 8.97



FRONT  
FLOOR

\$ 5.38



REAR  
AXLE

\$ 1.66



GLASS BEADING  
ONE PIECE

\$ 2.48



HANDLE RUBBER  
GRIP SET

\$ 0.19



MUD FLAP  
RUBBER

\$ 0.22



KNOB

\$ 0.10



GLASS BEADING  
SET OLD

\$ 2.48



AXLE BOOT  
BAJAJ BIG

\$ 0.25



BATTERY  
CLAMP SET

\$ 0.25



HOOD  
YELLOW

\$ 9.52



FOUNDATION  
BOLT

\$ 0.47



ROTOR  
ASSLY

\$ 8.55



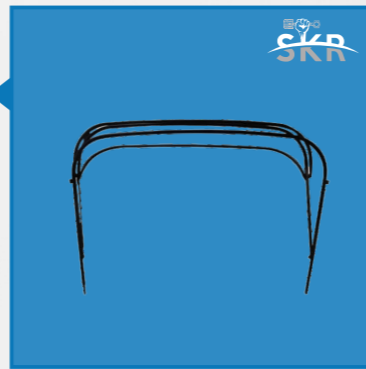
9 HOLE FRAME  
BEADING

\$ 0.66



HOOD  
SALIYA SET

\$ 05.72



GEAR  
CABLE

\$ 0.86



CLUTCH  
CABLE

\$ 0.97



ACCELERATOR  
CABLE

\$ 0.72



CLUTCH  
RELEASE PV

\$ 6.21



ENGINE  
MOUNTING

\$ 3.03



CROSS  
MEMBER

\$ 0.00



COIL PLATE  
ASSLY OLD

\$ 5.38



FRONT FORK  
OLD (V)

\$ 11.59



BRAKE  
PIPE

\$ 2.28



ACCELERATOR  
INNER

\$ 0.06





Haridwar Park, Near Police Chowk, Navagam, Rajkot 360 003 Gujarat, INDIA

[info@indianthreewheelerparts.com](mailto:info@indianthreewheelerparts.com) | +91 87580 99000

[www.indianthreewheelerparts.com](http://www.indianthreewheelerparts.com)